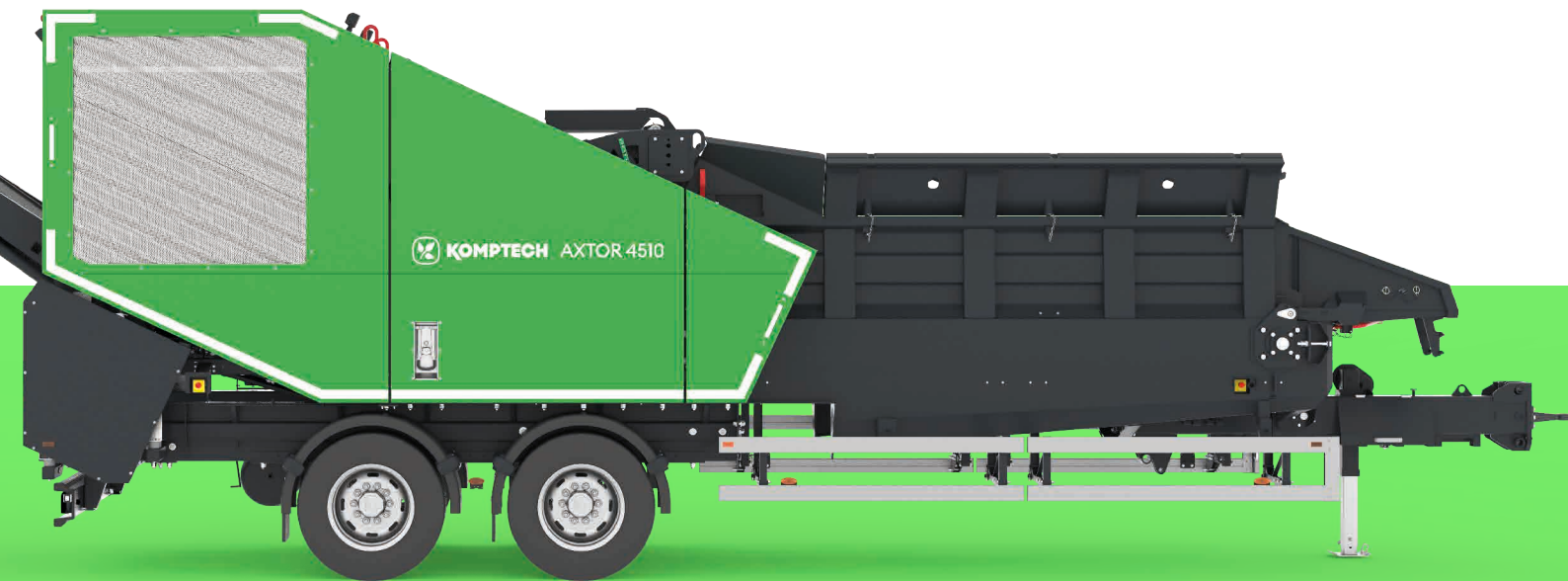




# AXTOR MOBILE

Shredder for wood  
and green waste





OVERVIEW

# High-speed shredder for wood and green waste

The Axtor is a versatile machine for processing wood and green cuttings. With a 340 kW engine and a total weight under 19 tonnes in the trailer version, the Axtor 4510 is an exact fit for the requirements in the light and medium duty categories. If more is needed, there is the powerful Axtor 6210 with 430 kW; throughputs of 300 cubic metres and more are not uncommon. Compact dimensions and high flexibility in applications also make the Axtor idea for subcontractors. Green cuttings, waste wood or logs – through its ability to work in either shredder or chipper mode, the machine always outputs the desired product. Other features of the Actor series are a wide feed area with tilt hopper, tough and aggressive intake system, and roomy service platform with excellent access to engine and drum for maintenance work.

- ▶ Active intake with tough steel belt conveyor and very large intake opening
- ▶ Two shredding modes - shredder or chipper
- ▶ Ideal maintenance access to engine and drum
- ▶ Mobility: Central axle trailer or tracked chassis

Engine power (kW)

340  
↓  
430

Max. throughput (m<sup>3</sup>/h)

250  
↓  
300

Gross weight (t)

19  
↓  
23

# Wide range of applications



## 01 Composting: green waste, yard waste

Green waste is a valuable input material for composting. Fibrous shredding increases the surface area, for speedy microbial decomposition. To do this, the Axtor uses free swinging tools with carbide attachments that shred the material at high drum speed. Also available are free swinging tools with shredding blades give the shred a more cut character. Everything landing on the huge feed table is grabbed instantly by the active feed system and pulled in automatically – time-consuming “push-in“ is not necessary.

## 02 Biomass fuel: forestry residue, bark, screening residue

Bulky materials present no problem for this aggressive feed. No wonder - the Axtor feed opening is 1.43 metres wide and 0.85 metres high. With the drum turning at reduced speed, fixed tools with robust shredding blades break the material down into defined particles. If contraries are expected, the use of free-swinging tools with interchangeable blades may be the better alternative.

## 03 Waste wood processing

Untreated and mixed waste wood after pre-shredding and metal separation is best shredded with free swinging blades with armored attachments. These are very resistant to contraries and deliver the ideal chip size for use as fuel or material. For high loads, the drum is available as a heavy duty version.

## 04 Wood chips from logs

With fixed tool holders and chipping blades, the Axtor is a powerful chipper. Because contraries cannot be ruled out, the fixed tool holders have a patented overload protection system which prevents damage to the drum body, shaft and bearing on contact with a solid contrary. With its large drum diameter and efficient shredding geometry, the Axtor can handle logs up to 0.8 metres in diameter.



# The machine in greater detail

Komptech stands for quality, reliability and value retention. This is assured by the use of high-quality components, certified production processes and gapless quality control.



01



### Engine/drive

- Modern Caterpillar diesel engine with 340 or 430 kW
- Gentle gear changes with electrohydraulic belt tensioner
- Drum speed 460 or 912 rpm, depending on the belt pulley

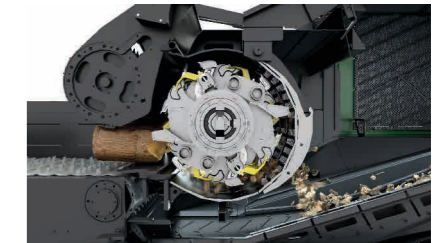
02



### Material feed

- Large feed area, open to the front with tilt hopper
- Active feed with robust steel belt conveyor and aggressive feed drum
- Plug-in sidewall for more hopper volume, can be mounted on both sides

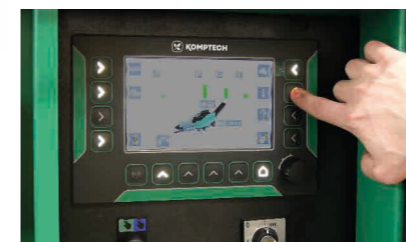
03



### Shredding unit

- Very large feeder opening with 850 x 1,430 mm (H x W)
- Large 1,100 mm dia. open drum
- 32 tool positions, easy tool change thanks to individual mounting

04



### Operation

- Operating panel with a 7" high resolution screen and intuitive menu guidance
- Onboard diagnostics, with trouble-shooting integrated into the control system for fast problem solving

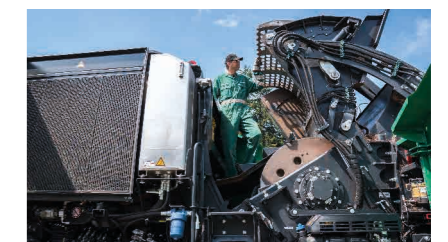
05



### Discharge system

- One-piece discharge conveyor, hydraulically foldable
- Designed as steep conveyor with fixed inclination and 4.5 m discharge height (Axtor 6210: optional 5 m)
- Optional magnetic drum for Fe-separation

06



### Maintenance

- Large service panels for easy access to all maintenance points
- Central service platform easily accessible by integrated ladder
- Screen basket hydraulically extendable for easy changes

#### Mobility



Trailer Track

#### Screen baskets



30 | 45 | 60 | 80 | 100  
125 | 150 | 200 | 460

#### Drum speed



Chipper mode Shredder mode



## Efficient and flexible

The biomass market is dynamic. To thrive in this market as a fuel supplier or shredding service provider, you need a flexible machine like the Axtor. With the right combination of shredder or chipper mode and the right blades and screening baskets, it can turn a wide variety of input materials into a product of the desired quality with high throughput. Material discharge is by a conveyor that starts well before the drum, thus effectively catching any leakage.

The feed table has a length of more than 4 metres. The active area with steel belt conveyor is 3.6 metres.

Conversion from shredder to chipper is straightforward. In approximately half a day, two people can replace the free swinging tools with fixed mountings and precision chipping blades, as well as changing the drum speed. Overload protection for the screen basket, friction floor and fixed tools minimizes damage in case of contraries.

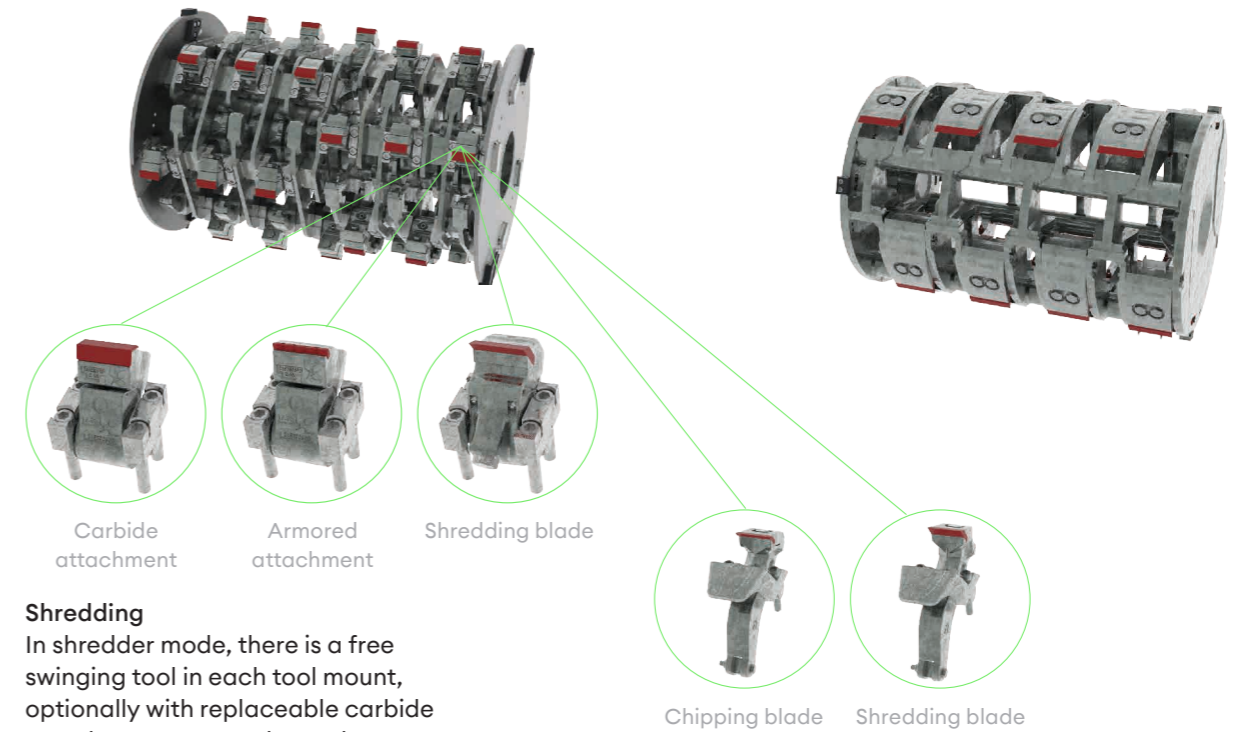
## Options

### Universal drum for shredding or chipping

There are 32 tool mounts spiralling around the circumference of the drum. Each is on a separate floating axle and can be individually removed.

### Chipping drum for perfect wood chips

A special chipping drum makes the Axtor a full-blooded chipper. 16 solid chipping blades and an ideally positioned counter cutter give a force-saving cutting geometry, as well as high performance and output quality.



#### Shredding

In shredder mode, there is a free swinging tool in each tool mount, optionally with replaceable carbide attachment, armored attachment or changeable shredding blades. The drum speed is 912 rpm, or 460 rpm when using the shredder blades.

#### Chipping

In chipper mode, there is a fixed tool holder in each position that can take chipping or shredding blades. Work is done entirely at a speed of 460 rpm.





AT WORK

# In daily use

## Plenty of room in the hopper

The feed hopper is sized to be a perfect match for the machine's performance. Over 4 metres long, almost 2 metres wide, and just 2.2 metres loading height – these dimensions mean stress-free work. For long logs the movable hopper opens in the front, and it can also be opened for better feeding of other materials.

## Efficient shredding

The combination of large feed opening and aggressive feed drum makes for easy feeding of bulky items. The 1.1 metre drum diameter and ideally positioned counter cutter give a power-saving cut geometry. Overlengths are kept out by the screen basket around the drum and the friction floor.

## Ready for anything

Options let users configure the Axtor for the exact task. Wireless remote control and central lubrication add ease of use and an extended discharge conveyor allows high discharge cones. A magnet drum separates ferrous items from the material flow, and a feed device provides mobility at the point of use.

## Perfect maintenance access

The central service platform can be accessed effortlessly by the integrated ladder after opening the side doors. From there all maintenance work on the drum and engine can be done easily and safely, as can screen basket changes.

## Always know what's going on

The Connect! app, which is freely usable with every Axtor, enables transparent administration, optimum job planning and remote monitoring of machines. GPS data provides for precise locating, and the data history and data exports offer many possibilities for improving operating economy. NEW: Throughput measurement and evaluation with Connect!.

Functions



Feed speed regulation



Feed programs



Manual reversing



Swivel screen basket

Operation



Hydraulic tilt hopper



Lights



Condition monitoring

Options



Feed device



Remote control



Magnet drum



## SERVICE

# The Komptech plus



### Top advice

We'll show you how to optimize your processes, based on our experience and extensive data analyses.



### Service near you

Expert technicians are on-site quickly to make sure your machines keep running.



### Spare parts always available

Intelligent stocking for the fast, economical provision of high-quality spare parts.



### All-in solutions

From individual mobile machines to complex stationary systems, with us you get the right process solution.



### Productivity in view

Apps and integrated monitoring let you keep an eye on operating data and economy.



### Need-based service

Our maintenance and service agreements, as well as extended warranties, are aligned with your needs.

# Overview of our technology

Look here for the newest updates, specifications and more detailed descriptions:



Model	4510	6210
<b>Engine</b>		
Manufacturer	Caterpillar	Caterpillar
Power (kW/HP)	340/462	430/585
<b>Material feed</b>		
Feed table L x W (mm)	4,155 (3,600 active) x 1,430	4,155 (3,600 active) x 1,430
Feed table height (mm)	2,250	2,250
Number of feed drums	1 horizontal	1 horizontal
Feeder opening H x W (mm)	850 x 1,430	850 x 1,430
<b>Shredding unit</b>		
Drum diameter x drum width (mm)	1,100 x 1,550	1,100 x 1,550
Tools	32 free swinging tools or 32 fixed tool holders	32 free swinging tools or 32 fixed tool holders
Drum rpm	460/912	460/912
<b>Material discharge</b>		
Conveyor belt, width (mm)	1,200	1,200
Discharge height (35°, mm)	Trailer: 4,500   Track: 4,380	Trailer: 4,500   Track: 4,380
<b>Dimensions in transport position/working position (conveyor belt 35°)</b>		
Transport position L x W x H (mm)	Trailer: 9,980 x 2,497 x 3,700 Track: 8,390 x 2,497 x 3,580	Trailer: 9,980 x 2,497 x 3,700 Track: 8,390 x 2,497 x 3,580
Working position L x W x H (mm)	Trailer 2-axles: 13,347 x 2,497 x 4,500 Track: 12,469 x 2,497 x 4,380	Trailer 3-axles: 13,347 x 2,497 x 4,500 Track: 12,469 x 2,497 x 4,380
Weight (t)	Trailer: -19   Track: -21	Trailer: -21   Track: -23
<b>Throughput (dependent on material)</b>		
Throughput (m <sup>3</sup> /h)	up to 250	up to 300

## Axtor 4510 Trailer



## Axtor 6210 Trailer



## Axtor 4510/6210 Track





# Never waste an opportunity

**KompTech GmbH**  
Kühau 37  
8130 Frohnleiten, Austria  
+43 3126 505 - 0  
info@kompotech.com

© 2022 KompTech GmbH. No liability accepted for changes, errors and misprints. Printed on PEFC-certified paper, which was produced in Styria, Austria.

## We create value for you



### **Waste-stream expertise**

Because you need a setup that is tailored to your waste stream.



### **Innovative technology**

Because you need to adapt your output to your market needs.



### **Flexible sales models**

Because you have the choice between new, rental and used machines.



### **Service excellence**

Because you always need to keep your system running.